



Public Health
England

Introducing Public Health England

Protecting and Improving the Nation's Health

Professor Kevin Elliston: Deputy Director of Health & Wellbeing South West

Public Health England

- Public Health England is the authoritative leader in national public health and the expert service provider for public health in England
- Public Health England's mission is:
“to protect and improve the nation's health and to address inequalities, working with national and local government, the NHS, industry, academia, the public and the voluntary and community sector.”

The Public Health System: an integrated whole system approach

Government

- DH responsible to parliament, with clear line of sight through system
- Cross-government senior officials group to improve health outcomes and use Cabinet Committee structure as required
- CMO to continue to provide independent advice to Government

Local authorities

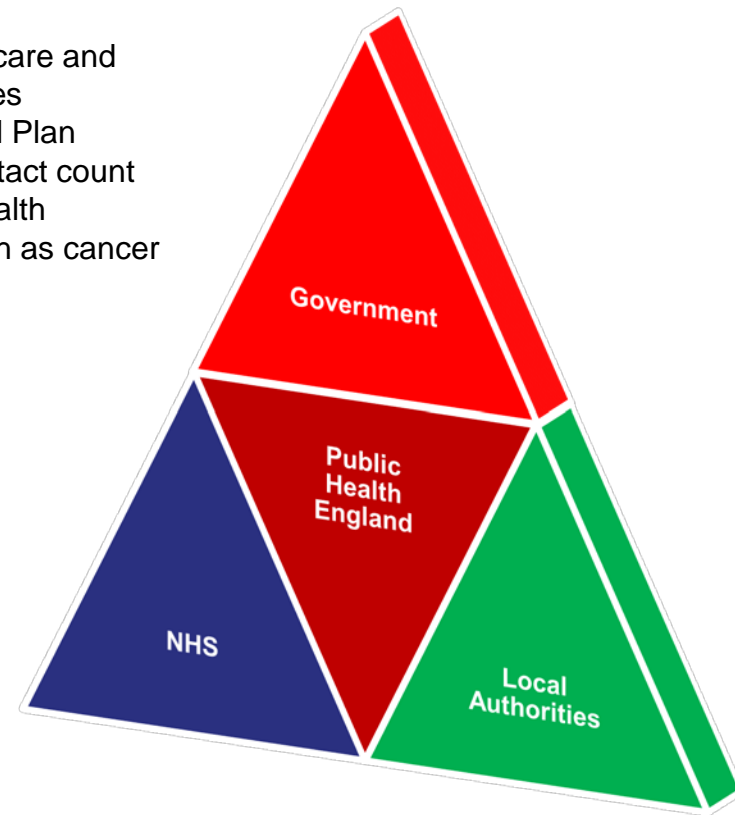
- Public health functions integrated into their wider role, helping to tackle the wider social and economic determinants of health.
- Leading for improving health and coordinating locally for protecting health
- Promoting population health and wellbeing – role of Directors of Public Health

Public Health England

- Integrated national body
- Strengthened health protection systems
- Supporting the whole system through expertise, evidence and intelligence

NHS

- Delivering health care and tackling inequalities
- Five year Forward Plan
- Making every contact count
- Specific public health interventions, such as cancer screening



PHE at a glance

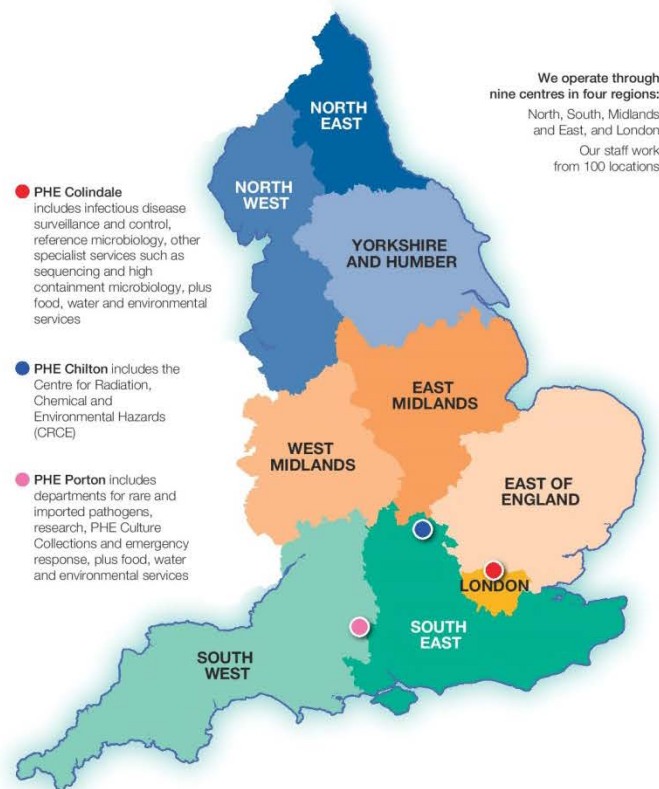
To deliver a broad range of products and services we employ approximately 5,600 staff:

2397 Protection from infectious diseases National centres, regional network and capability to identify infectious disease, surveillance and management of outbreaks	517 Protection from environmental hazards Including chemical, radiation and environmental hazards, emergency response	1075 Local/regional includes: • health protection - 536 • screening and immis - 243 • health improvement and population healthcare - 277	322 Knowledge, intelligence and digital Translating data, research and experience into practical guidance for local decision making; digital capacity and supporting the use of digital technologies	293 Disease registration Including the world's largest cancer database
264 Screening programmes Developing and quality assuring cancer and noncancer screening programmes	30 Research translation and innovation Enabling rigorous researched evaluation of public health interventions both locally and nationally	199 Health and wellbeing National expertise in public health evidence-based interventions	60 Health marketing Delivering healthy behaviour change campaigns	20 Global health Protecting the UK from emerging international threats, maintaining and developing relations with WHO and other international and national public health agencies
With business support from: 167 Financial and commercial	136 Infrastructure (ICT and estates)	47 Human resources	66 Communications	64 Corporate affairs

Our funding 2015/16



Our national and local presence



We operate through nine centres in four regions: North, South, Midlands and East, and London
Our staff work from 100 locations

PHE has eight regional public health laboratories based in large NHS hospitals

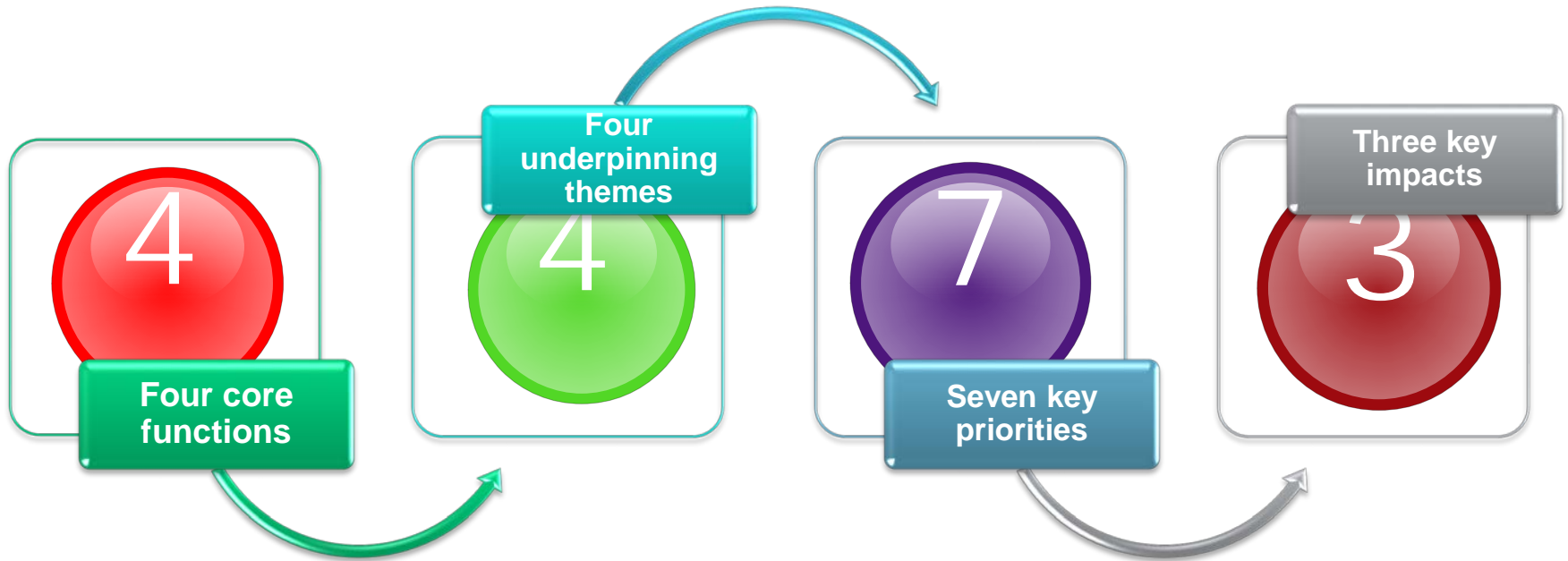
What do we do?

Our work saves lives, promotes wellbeing and creates environments that enable individuals, families, and communities be informed, empowered, healthier and more productive.

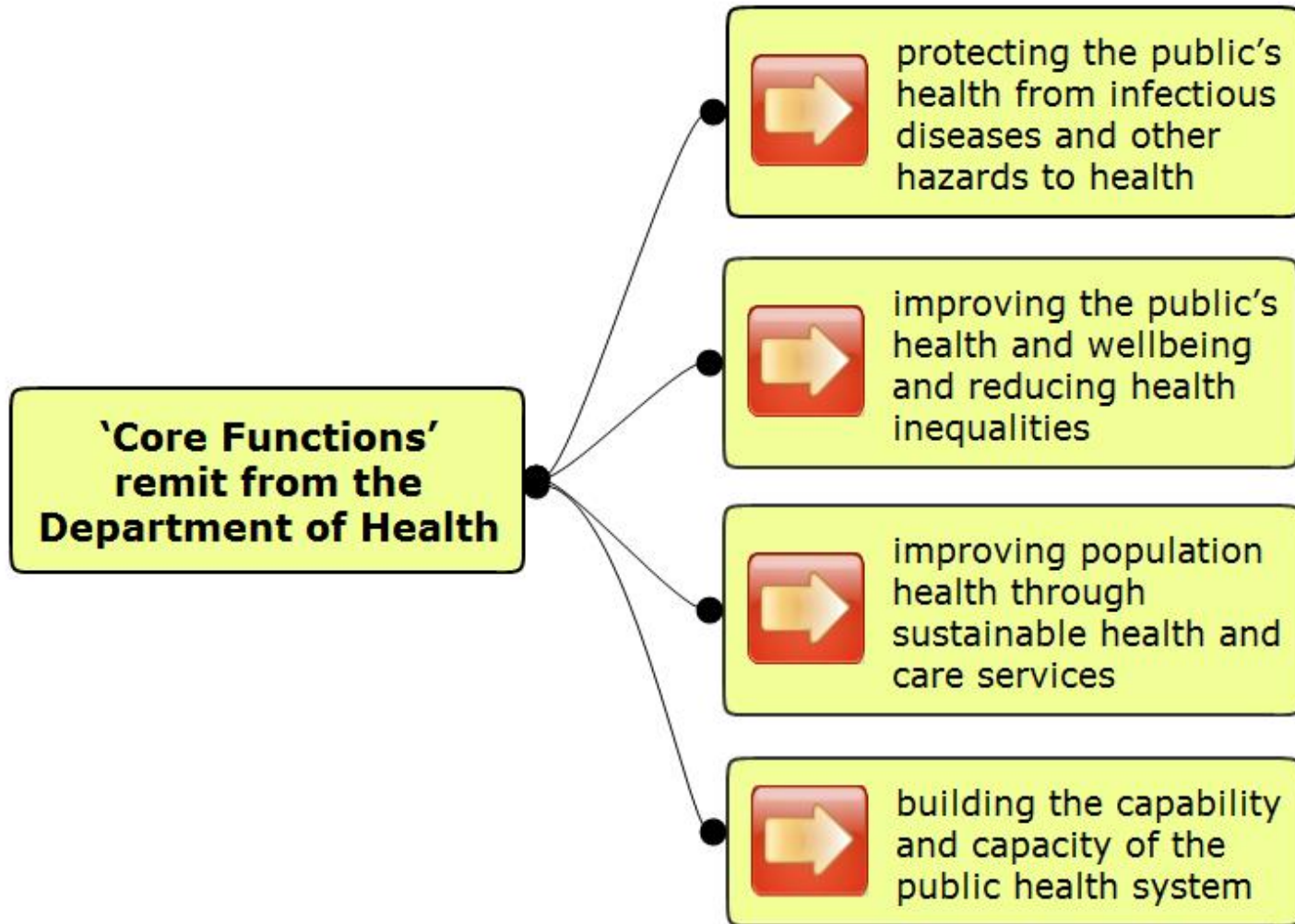
Where do we focus our efforts?

We focus on the major drivers of disease, disability, disadvantage and death and tackle health inequalities.

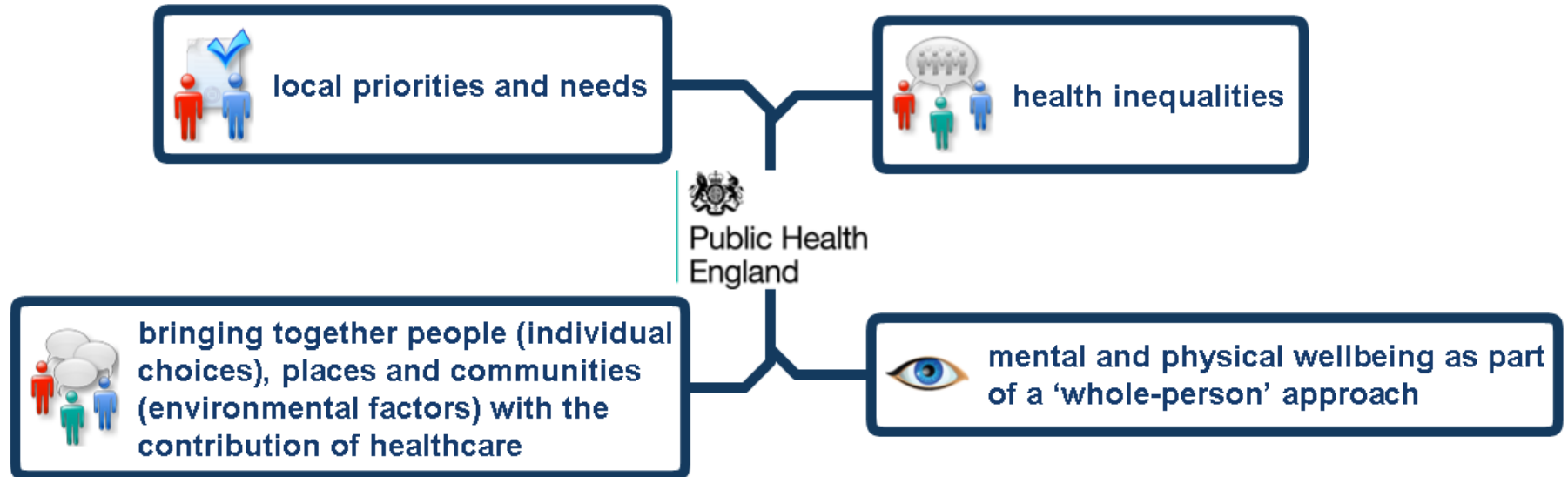
PHE: functions-themes-priorities-impacts



PHE: Four core functions



PHE: Four underpinning themes



PHE - seven key priority areas



Tackling obesity



Reducing smoking



Reducing harmful drinking



Ensuring every child has the best start in life



Reducing dementia risk



Tackling antimicrobial resistance



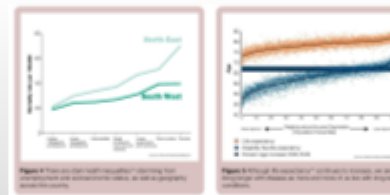
Reducing tuberculosis

PHE: three key impacts

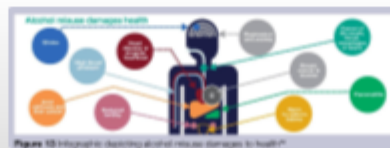
Key Impacts



encourage behaviour change

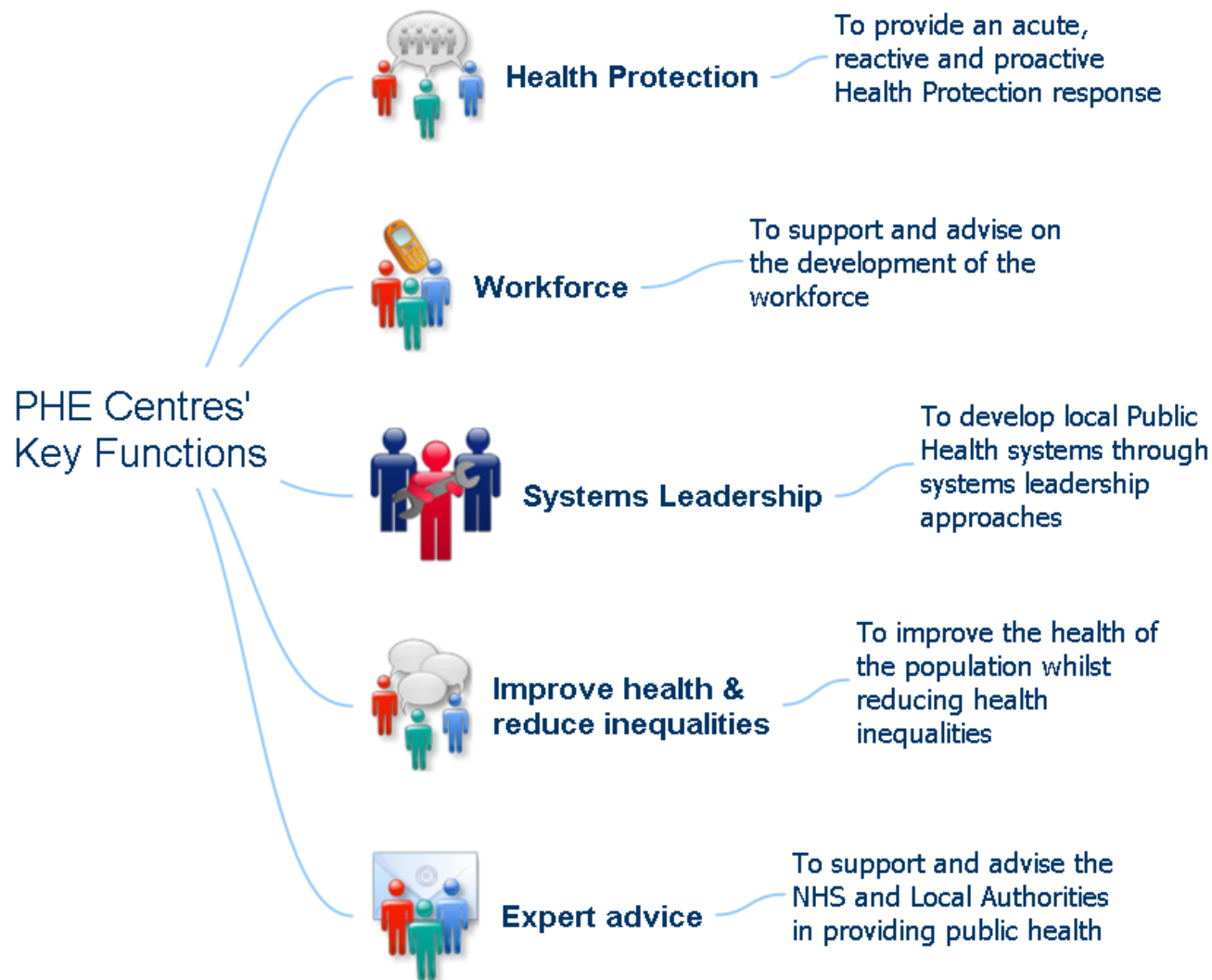


reduce avoidable mortality and address damaging trends in health inequalities



reduce the financial burden of ill-health on the NHS

What PHE Centres do



Our work promotes wellbeing and creates environments that enable individuals, families and communities be informed, empowered, healthier and more productive.

Where we focus our health improvement efforts

We focus on: 'People and Place'



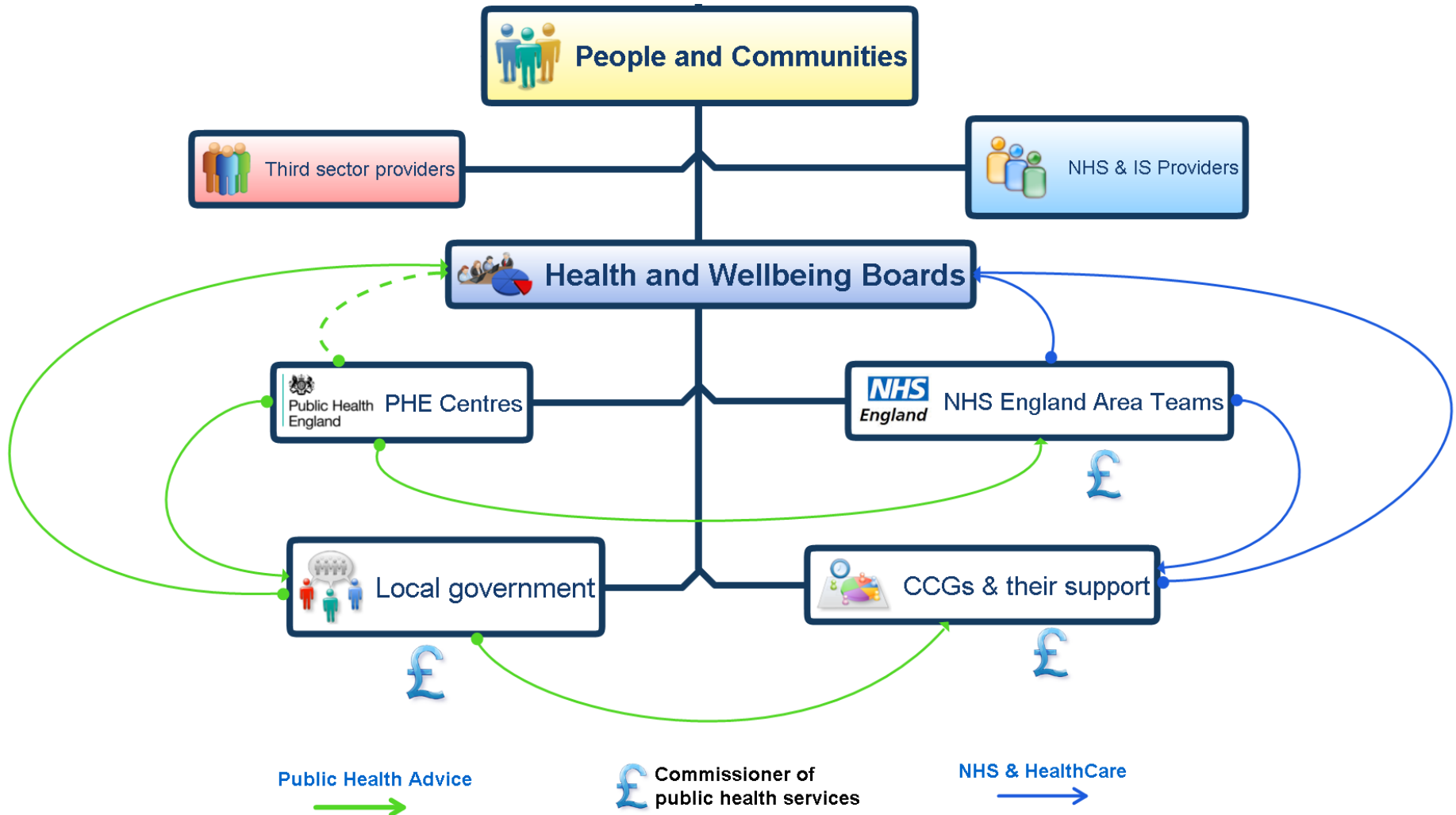
Including the major drivers of disease, disability, disadvantage and death and tackle health inequalities in support of the locally led public health system.

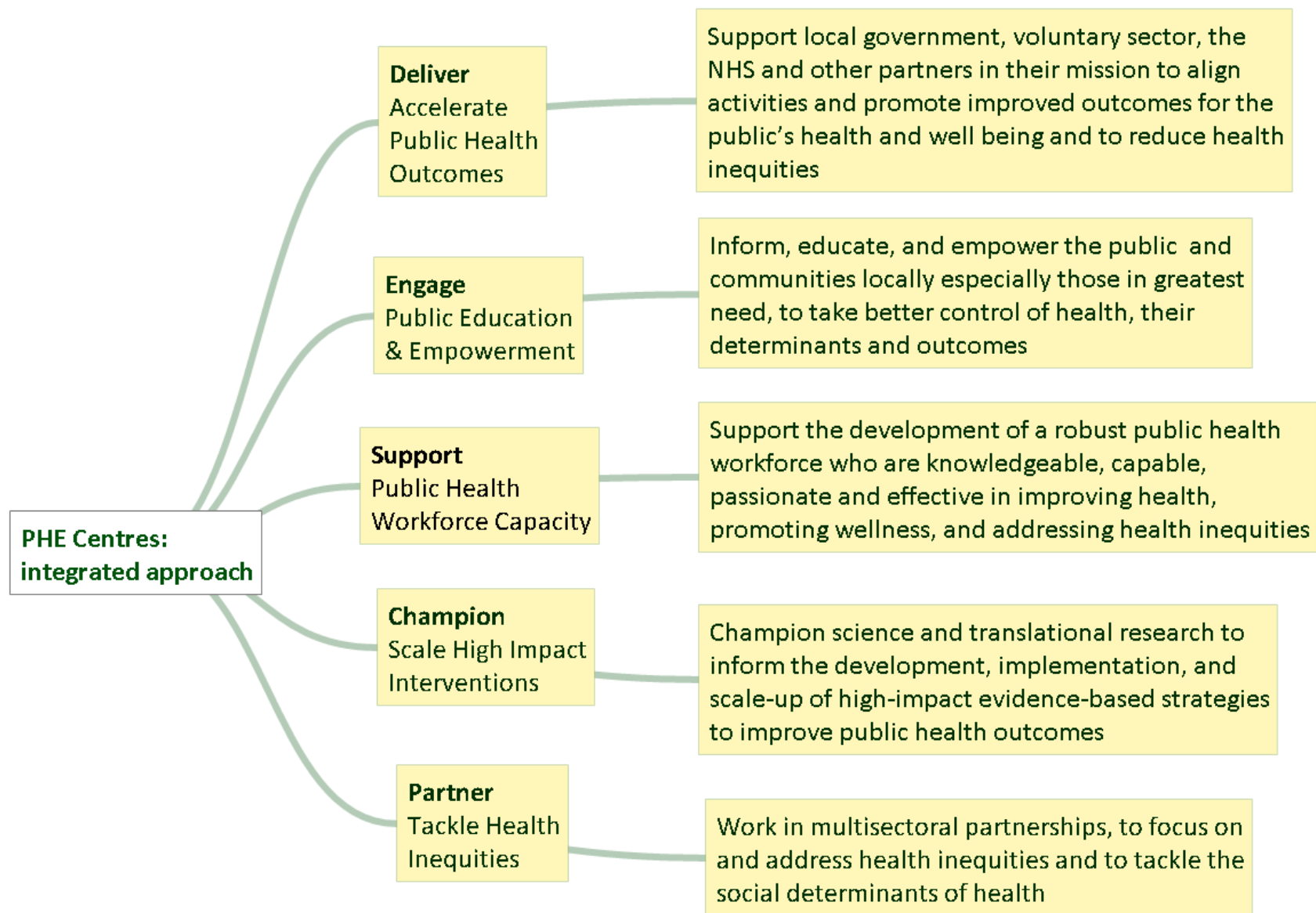
Promoting innovation for impact

PHE Centre's

- Support the development and delivery of high-quality, effective, evidence-based prevention programmes at local level, with and for the locally led public health system
- Build public health capacity in including public mental health, population healthcare etc.,
- Work with diverse partners to encourage settings-based approaches to health and wellbeing, in addition to promoting health across the lifespan
- Integrate insights from behavioural science to improve the effectiveness, efficiency, and impact of PHE's and local public health programmes
- Use the 'place based' approach to public health development at local level

Place based approach to public health





**PHE Centres take a
'Life course Perspective'**

**Healthy Infants,
Children, and
Young Adults**

A focus on improving health and health outcomes for mothers and infants, children, teens and young adults.

**Healthy Adults and
Older Adults**

All people, and especially those at greater risk of health disparities, will achieve their optimal lifespan with the best possible quality of health, including mental health, in every stage of life.

**Healthcare Public
Health**

Support sound decision-making and policy change within the NHS to deliver, scale up, evaluate and improve effective clinical preventive services that drive population health.

**Healthy People in
Healthy Places**

Ensuring that the places where people live, work, learn, and play will protect and promote their health, especially those people at greater risk of health disparities.

**Health in All
Policies**

Inform and support local government partners in sound decision-making and policy change at all levels to deliver and evaluate programmes and address social determinants of health.

The locally led Public Health System

Elected Members lead the local public health system

Directors of Public Health are the strategic leaders overseeing public health and tackling inequalities and local health improvement functions

Local Public Health Team Key Functions

Health Improvement



Health Protection



Health Services



Public Health Intelligence



Academic Public Health



Workforce Development



The 'Public Health Outcomes Framework'

PHE Centres work with intelligence colleagues to use the PHOF and other data sets to inform their knowledge, intelligence and understanding of the local public health system

Public Health Outcomes Framework

Wider Determinants of Health

Health Improvement

Health Protection

Healthcare & Premature Mortality

Indicator	Period	England	Devon, Cornwall and Somerset	Cornwall	Devon	Isles of Scilly	Plymouth	Somerset	Torbay
2.01 - Low birth weight of term babies	2011	2.8	-	2.4	2.3	-	2.5	2.8	3.2
2.02 - Breastfeeding - Breastfeeding initiation	2012/13	73.9	-	79.8	77.8	-	80.1	79.1	71.1
2.03 - Breastfeeding - Breastfeeding prevalence at 6-8 weeks after birth	2012/13	47.2	-	60.7	50.8	-	54.3	51.4	36.8
2.04 - Smoking status at time of delivery	2012/13	12.7	-	13.8	8.5	-	16.1	17.4	17.6
2.04 - Under 18 conceptions	2012	27.7	28.4	28.1	27.4	-	30.5	24.4	30.5
2.04 - Under 18 conceptions: conceptions in those aged under 15	2012	5.6	5.2	4.0	5.3	-	7.3	4.4	6.0
2.06 - Excess weight in 4-5 and 10-11 year olds - 4-5 year olds	2012/13	22.2	-	24.1	24.9	-	24.8	23.3	28.6
2.06 - Excess weight in 4-5 and 10-11 year olds - 10-11 year olds	2012/13	33.3	-	31.0	29.7	-	32.1	29.4	38.5
2.07 - Hospital admissions caused by unintentional and deliberate injuries in children (aged 0-14 years)	2012/13	103.8	-	105.5	103.8	-	103.3	114.2	81.2
2.07 - Hospital admissions caused by unintentional and deliberate injuries in children (aged 0-4 years)	2012/13	134.7	152.7	136.3	133.0	-	223.1	176.1	102.4
2.07 - Hospital admissions caused by unintentional and deliberate injuries in young people (aged 15-24)	2012/13	138.7	-	166.2	132.3	-	127.1	156.4	135.1
2.08 - Emotional well-being of looked after children	2012/13	14.9	-	14.8	15.9	-	12.9	15.6	15.1
2.12 - Excess Weight in Adults	2012	53.8	-	55.8	50.5	54.4	58.0	55.5	66.5

Research is key:

Public Health England (PHE) is a research-informed organisation that is driving forwards the provision and use of evidence for decision-making across our public health system.

Research relevant to health and care is thriving due to sustained investment and new, productive relationships among researchers and those who would use their findings. In PHE we have taken a fresh look at the role of research and knowledge - or evidence - in supporting public health locally, nationally and internationally.

Public Health England does not commission research. Our mandate from Government, agreed with the Department of Health, refers to 'undertaking and contributing to research and development in areas relevant to its functions'.

PHE strategic priorities are:

Our primary function is to develop and oversee the implementation of the PHE strategy for research, translation and innovation.

knowledge- generate new knowledge to improve and protect health


infrastructure – build, share and sustain high quality infrastructure to enable research by PHE and others

capacity- support development of public health research capacity in PHE and elsewhere and inspire public health research careers

innovation- accelerate translation of research into policy and practice in public health and commercial products

communication- communicate widely and openly about how research is contributing to improving and protecting health and wellbeing and reducing health inequalities

PHE Research Strategy



The screenshot shows the GOV.UK website interface. At the top, there is a black header with the GOV.UK logo and a search bar. Below the header, a navigation bar lists various categories: Departments, Worldwide, How government works, Get involved, Policies, Publications, Consultations, Statistics, and Announcements. The main content area is titled 'Corporate report' and features the document title 'Doing, supporting and using public health research: PHE strategy'. It indicates the document is from Public Health England and was first published on 18 August 2015. A paragraph describes PHE's commitment to research, translation, and innovation. Below this, a 'Document' section includes a thumbnail image of the document cover, a link to the document, and technical details: 'Ref: PHE publications gateway number: 2015213' and 'PDF, 445KB, 45 pages'.

GOV.UK

Search

Departments Worldwide How government works Get involved
Policies Publications Consultations Statistics Announcements

Corporate report

Doing, supporting and using public health research: PHE strategy

From: Public Health England
First published: 18 August 2015

PHE's commitment to research, translation and innovation; to do research, to support research and to use evidence from research.

Document



[Doing, supporting and using public health research: the Public Health England strategy for research, translation and innovation](#)

Ref: PHE publications gateway number: 2015213
PDF, 445KB, 45 pages

<https://www.gov.uk/government/publications/doing-supporting-and-using-public-health-research-phe-strategy>

Partnerships are Key

PHE Centres cannot succeed by themselves.

Partnerships with local authorities, the NHS and the third sector are what will allow us to achieve the outcomes we want.

Our partners provide broader avenues by which the public interact with the health system and may be advocates for public health.

PHE will work with and support our partners to ensure the best outcomes.

PHE has a unique opportunity at Centre level to provide support at scale

PHE priorities – business plan

More information

