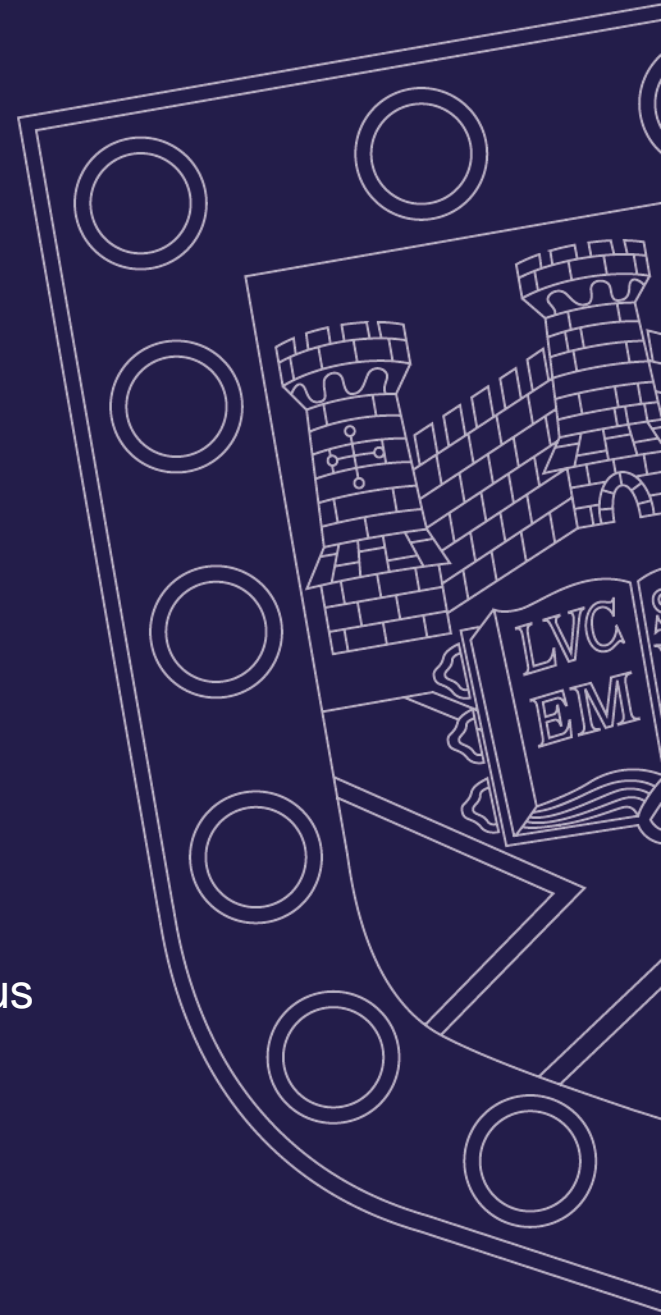




Impact and Engaged Research Network: Spotlight on English Riviera Global Geopark

Monday 30 November 2015, 14.30 – 16.00

Building:One, Kolade Teaching Room, Streatham Campus



Time	Activity
14.30	Welcome and introduction Dr Freyja Cox-Jensen, Lecturer in History, University of Exeter.
14.35	The English Riviera Global Geopark Melanie Border, English Riviera Global Geopark Coordinator and Mischa Eligoloff, Residents & Visitors, Torbay Council.
15.30	Question and answer session chaired by Dr Freyja Cox-Jensen.
16.00	Close of event.

Welcome and introduction

Dr Freyja Cox-Jensen, Lecturer in History, University of Exeter.



The English Riviera Global Geopark

Melanie Border, English Riviera Global Geopark
Coordinator and Mischa Eligoloff, Residents & Visitors,
Torbay Council.



English Riviera



GLOBAL GEOPARK



[illegible]

Global Geopark Network - 2004



Hexigten, Inner Mongolia

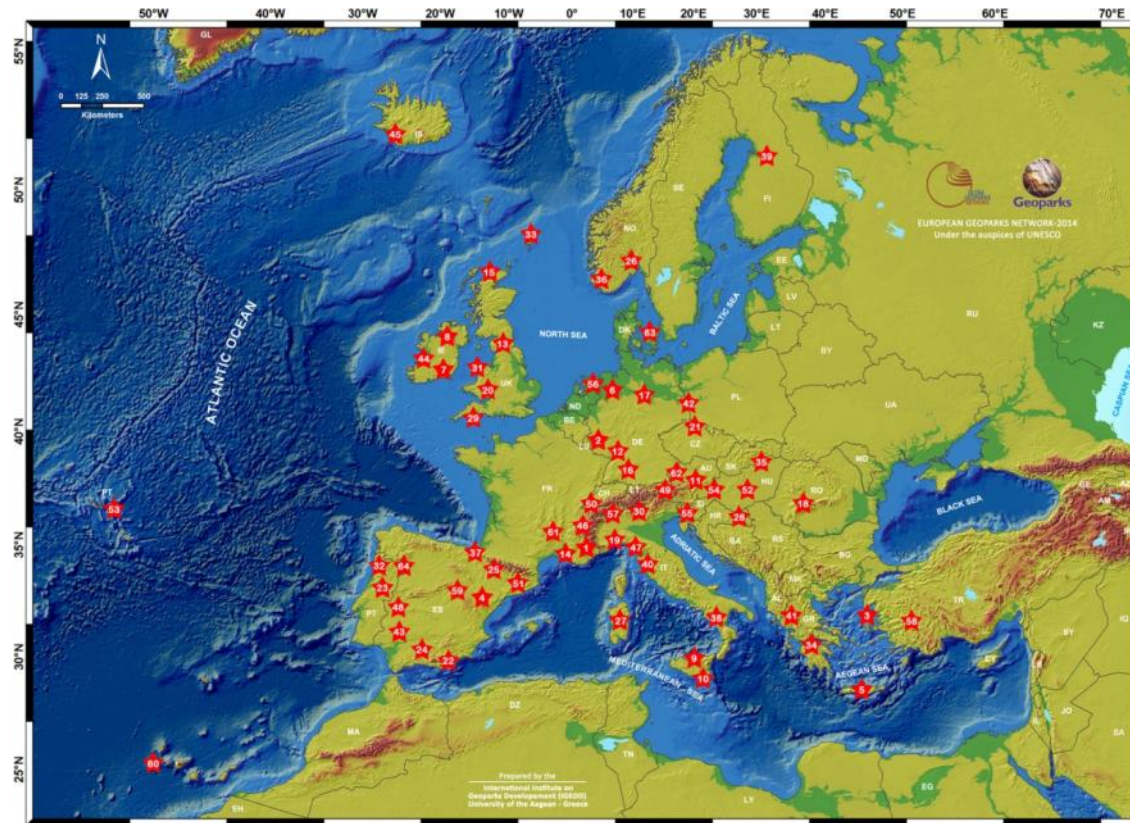


M'Goun, Morocco

Robust application and revalidation procedures



European Context – 69 members



European Context



Reserve Geologique de Haute
Province, France



Katla Geopark, Iceland



UK Global Geoparks



Marble Arch Caves



North Pennines



North West Highlands



Fforest Fawr



English Riviera



GeoMon



Geopark Shetland



What does Global Geopark status do for us?

- Connects our outstanding environment, heritage and culture
- Builds pride of place and ownership in the community
- A new internationally recognised marketing tool
- Raises quality and stimulates sustainable tourism
- Unlocks external funding



Community Involvement



Naturtejo



North Pennines



Paignton Geoplay Park



Education

Platform for Global Issues



E-School with Hong Kong



Teacher Training



Understanding and Awareness



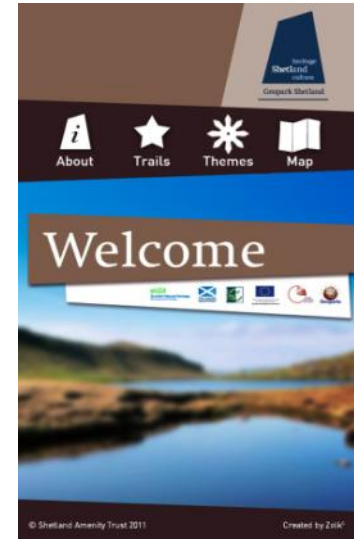
Sustainable Geotourism



Electric Bike Network



Reach Outdoors



Transnational Projects



Why is the English Riviera a Global Geopark?



World's First Urban Geopark - 2007

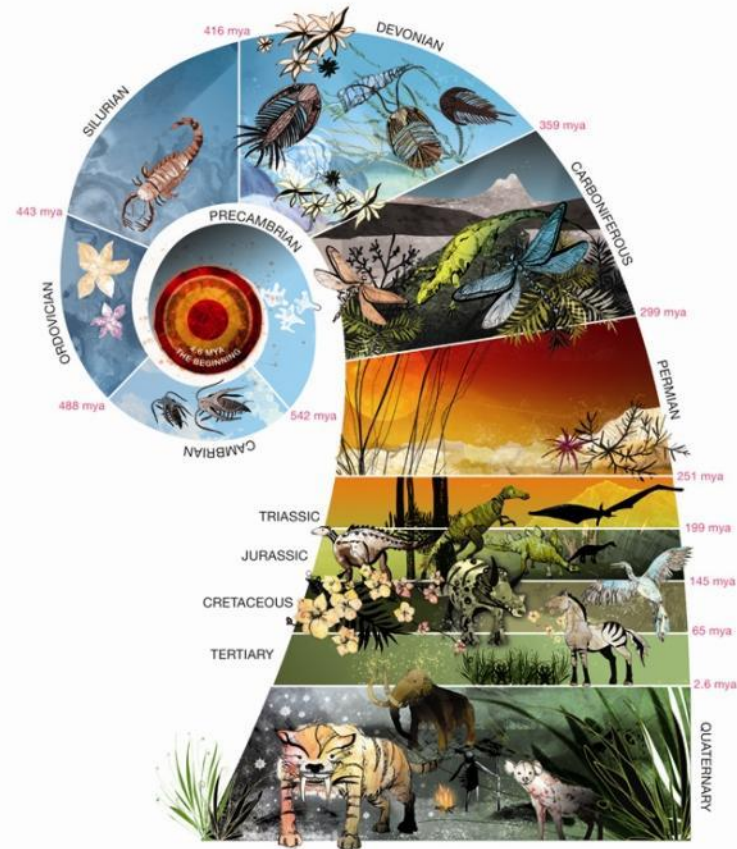


- 62.4 km² of land
- 41.5 km² of sea
- Population – approx 132,000
- 2015 – Most deprived area in SW



400 Million Years in the Making

- Devonian
- Carboniferous
- Permian
- Quaternary



Devonian ~ 400 mya



Devonian ~ 400 mya



Carboniferous ~ 300 mya



Permian ~ 290 mya



Permian ~ 290 mya



What happened next?

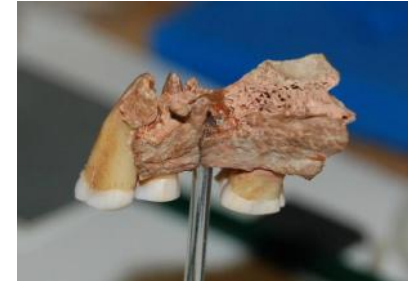


Quaternary ~ 2.6 mya



Kents Cavern

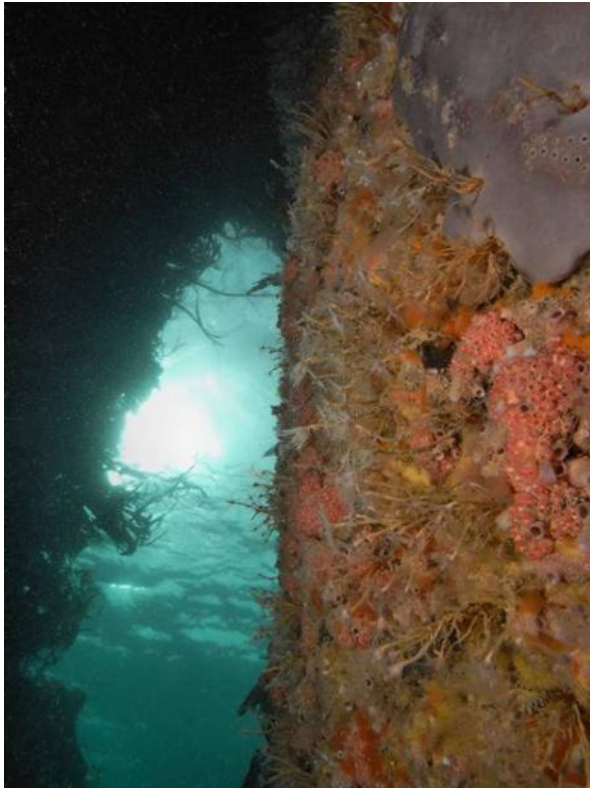
- Key site for the AHOB project
- 500,000 years of occupation
- Lower, Middle and Upper Palaeolithic
- *Homo heidelbergensis*, Neanderthal, *Homo sapien*



Geoparks are not just about the rocks!



Marine and Terrestrial Biodiversity



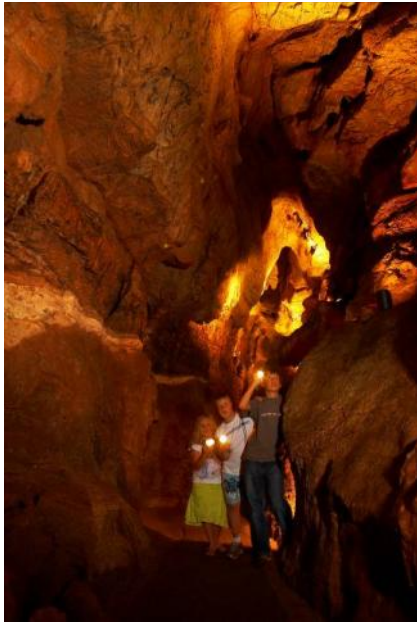
Marine and Terrestrial Biodiversity



Heritage



Geoparks are about people!



Events, Activities, Geopark Festival



Education – Local, National and International



Geotourism



Paignton Geoplay Park – Opened 2012

- Fun educational facility
- New attraction
- Catalyst for economic growth
- Health and wellbeing benefits





United Nations
Educational, Scientific and
Cultural Organization



English Riviera
UNESCO
Global Geopark

7th International UNESCO Conference on Global Geoparks



27th - 30th September 2016



A growing dialogue between the arts and health professions...

‘A **Geopark** is a unified area that advances the protection and use of geological heritage in a sustainable way, and promotes the economic well-being of the people who live there’

Cultural Capital - Pierre Bourdieu/Jean-Claude Passerson

Social Capital - Hanifan/Putnam

Index of Well Being - UK Government/NHS/Clinical Commissioners

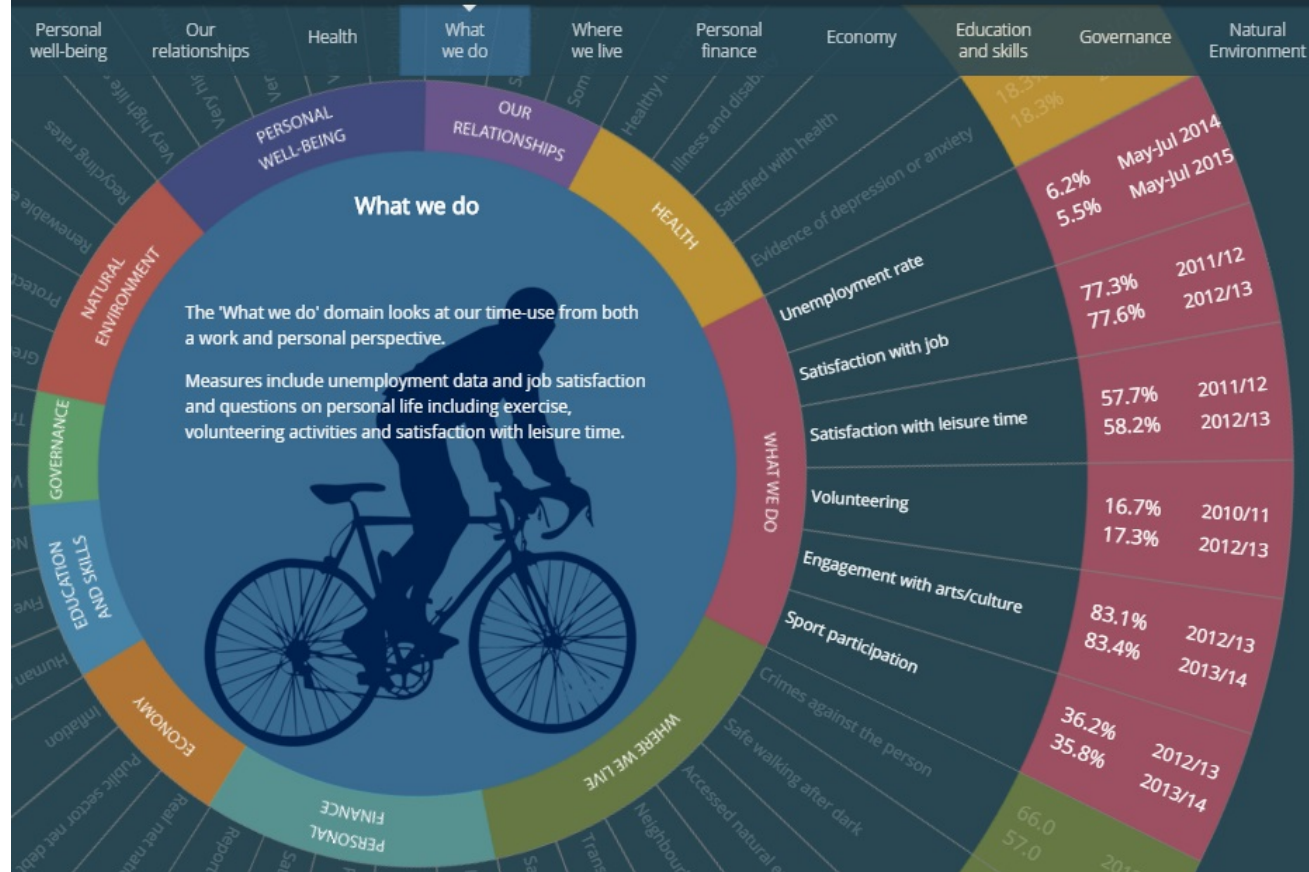


National Well-being

Measures of National Well-being

Measuring what matters:
Understanding the nation's well-being

September 2015 release
Latest available data at September 2015



Snapshot of Research Base

Culture Counts – A platform for Cultural Measurement (pilot supported by ACE)

<https://culturecounts.cc/>

West Midlands Arts/Health and Wellbeing: The Guide has been developed as a result of a partnership between Dudley PCT, Creative Health CIC and Arts Council England

<http://www.westmidlandsartshealthandwellbeing.org.uk/news/59/85/A-Guide-to-Evaluating-Participatory-Arts-and-Health-Projects.html>

Be Creative Be Well Arts, wellbeing and local communities

http://www.artscouncil.org.uk/media/uploads/pdf/BCBW_final.pdf

Creative and Credible (University West of England and Willis Newton)

<http://creativeandcredible.co.uk/>

Arts and Health – Australia

<http://www.artsandhealth.org/about-us/arts-and-health-australia.html>

Music and healthcare: the beneficial impact music has on health

<http://culturehive.co.uk/resources/music-and-healthcare-the-beneficial-impact-music-has-on-health>

Arts and health: five ways to wellbeing

<http://culturehive.co.uk/resources/arts-and-health-five-ways-to-wellbeing>



A growing dialogue between the Academics and Global Geoparks...

GeoPark Conference 3 strands....

- GeoOpera
- GeoArt
- GeoAmbassadors

Evaluation...

Deskwork – research current practice
Adopt a method/mechanism
Present to Conference (Sept)
Final Paper (Nov)

Partners: Geopark, Torbay Council, Bournemouth Symphony Orchestra, Communities of the Bay, 140 international Geoparks, UNESCO, Artists, Musicians, Torbay Community Development Trust, Ageing Well Project, Torbay Waste and Recycling, Arts Council, Plymouth University, Plymouth Barbican, South Devon College, Torbay Music Hub, Doorstep Arts , Torbay Schools...Exeter University



ACTION

Come to the Conference (present papers)

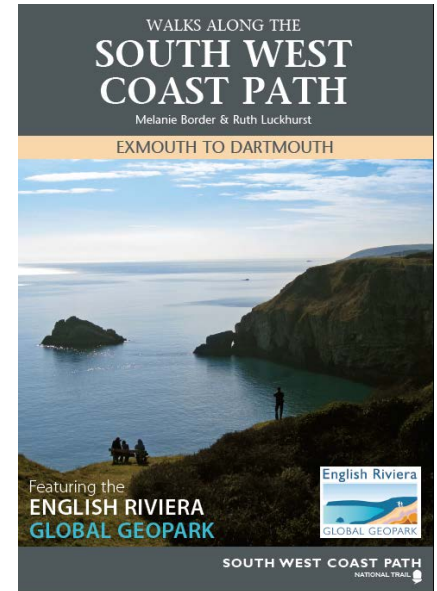
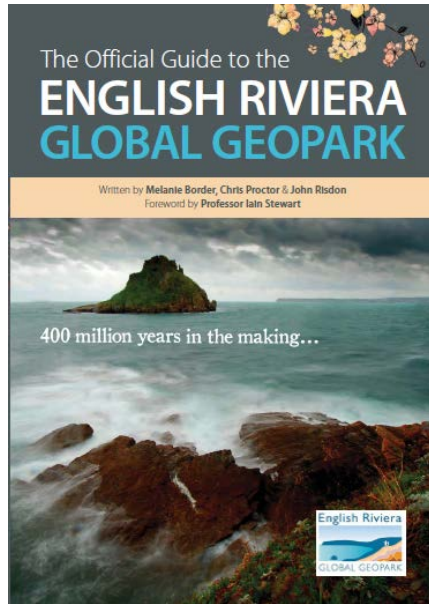
On going research in the Geopark – join the education advisory group

Evaluate Geopark conference creative strands

<http://creativetorbay.com/creative-torbay/geoopera-lovely-documentation-film/?postcode=&q=geo&network%5B%5D=1&resetpos=1>



www.englishrivierageopark.org.uk





United Nations
Educational, Scientific and
Cultural Organization



English Riviera
UNESCO
Global Geopark

Thank you for your attention



Question and answer session

Chaired by Dr Freyja Cox-Jensen.



Thank you for attending.

Our next event:

**Impact and Engaged Research Network
Skills for Impact: Impact capture and evidence**

Tuesday 15 December, Building: One, Kolade Teaching Room

