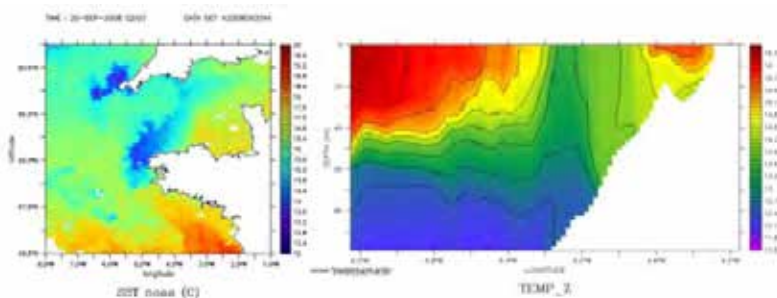


Autonomous Adaptive Ocean Sensing

Prathyush P Menon

Email: P.M.Prathyush@exeter.ac.uk Skype: [prathyush.menon](https://www.skype.com/people/prathyush.menon)

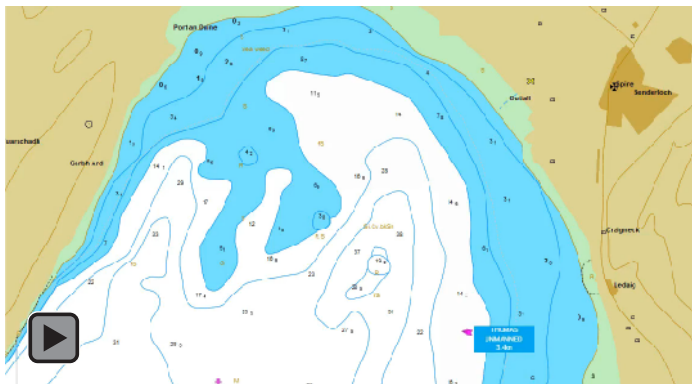
Expertise - Control, Optimization and Uncertainty Analysis



Autonomous behaviour

- ▶ Without piloting intervention (stand by to support, or to take over control)
- ▶ Decide the guidance/control commands (for e.g., way-point, or speed and heading) either on-board or on-shore
- ▶ Decision made based on instantaneous measurement of a quantity of interest (for e.g., temperature, sonar, Chlorophyll, TPH, etc.)
- ▶ Assume suitable sensor payload provides 'Right data at right rate and right format' (can account intermittent loss of data in a networked environment)

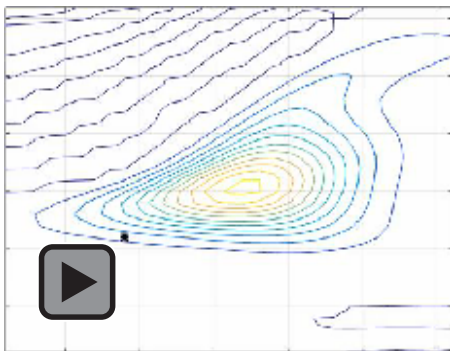
Sea trials



Features to offer

- ▶ Seeking source
- ▶ Optimal boundary tracking
- ▶ Cooperation in networked environment
- ▶ Specific leader follower strategy for information gain
- ▶ Embedded framework
- ▶ Probabilistic learning (exploiting prior and measurements)

Features to offer

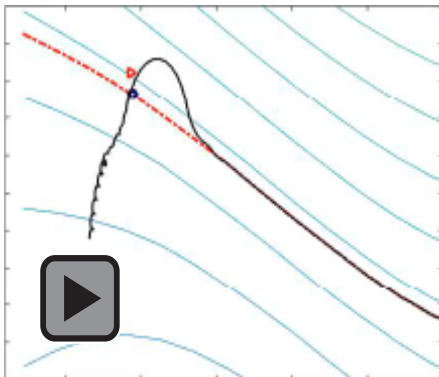


Source seeking

Features to offer

Master/slave

Features to offer



Collective sampling

In Progress

- ▶ Collision avoidance
- ▶ Connectivity enhancement
- ▶ Similar autonomous modes for Gliders (Straight, Helix, and Complex patterns)
- ▶ Distributed information processing

Acknowledgments

- ▶ Marine South East Ltd.
- ▶ Met Office, UK.
- ▶ Funding support



Innovate UK



Thank you.